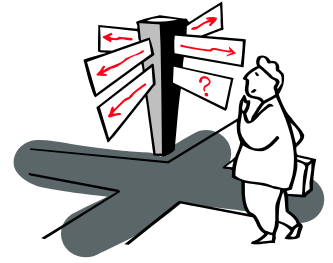


7 February 2019

1

"Treasure Hunt"



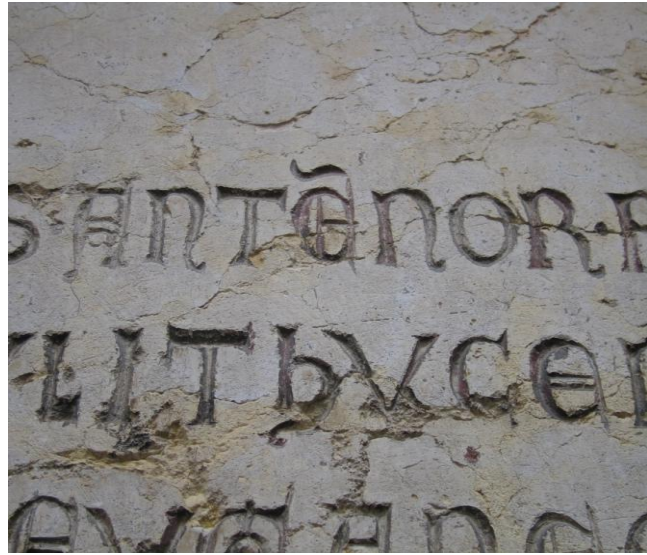
STARTING POINT Prato della Valle

At each station you' ll find a teacher from Marconi who will give you some info about the specific monument

- 1) Walk along **Via Luca Belludi** and reach (1) **St. Anthony's church**: find out what the first picture is and where it is.
- 2) Move to **Via del Santo**, go straight on and turn left: find out where **picture 2** is situated and what it is and why it is so important for Padua history.
- 3) Reach The **University (Il Bò)** , discover where **picture 3** is. Then find out some Latin dates: what do they mean?
- 4) Move to "**Caffè Pedrocchi**": enter and ask the waiter how old it is, what its function at the beginning was and how it is defined by the population of Padua and why.
- 5) Move to **Piazza della Frutta**: Why is it called "Piazza della frutta"? and what was "**Palazzo della Ragione**"? What is its shape?
- 6) Go straight on and reach **Piazza dei Signori**, and **Torre dell' Orologio**: (Ask people around)
When was the clock built?
What happened to the builder of the clock?
- 7) Go back to the tomb of Antenore where there is the palace of Province for the official meeting



1



2

3

